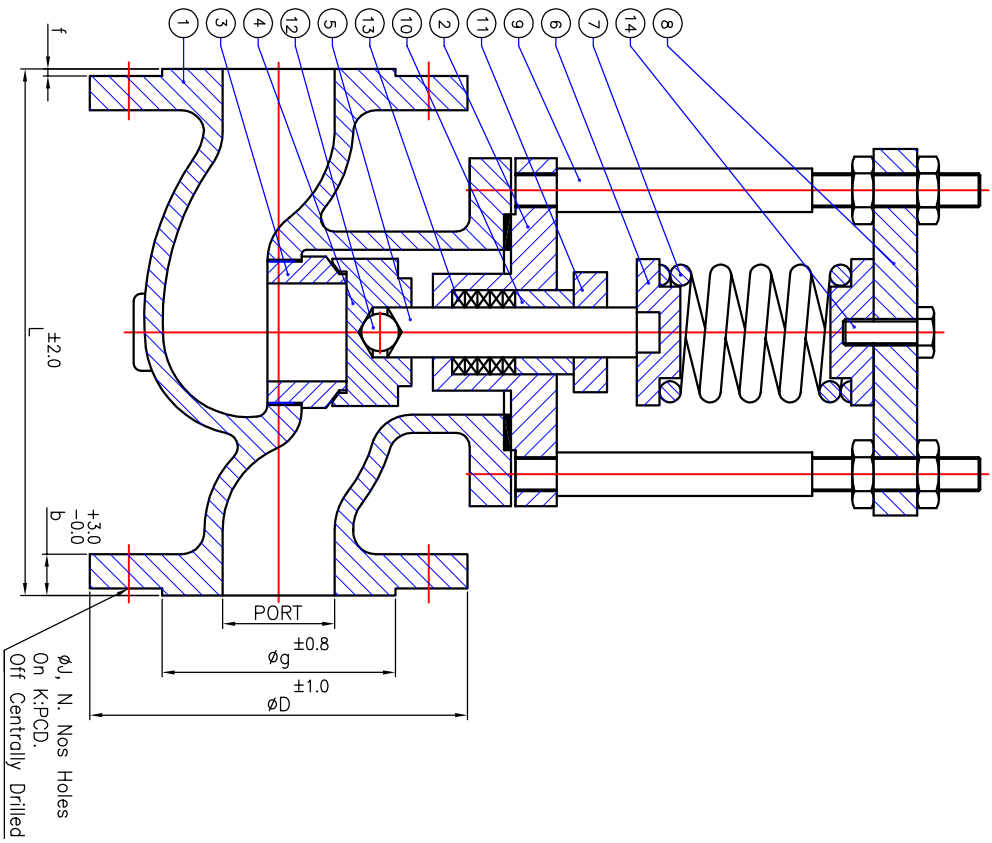


Due to continuous product development we reserve the right to change better quality, material & minor design changes

This drawing shall not be copied or reproduced in any form without the prior written permission of the company

Technical Data

- ⊙ FACE TO FACE : DIN 3202 (PART-1)
- ⊙ END TO END : DIN 3202 (PART-2)
- ⊙ FLANGES CONNECTION : DIN 2545 (PN 40)



TEST PRESSURE			
TESTING	BODY	SEAT	
HYDRAULIC	30 Kg/cm ²	21 Kg/cm ²	21 Kg/cm ²

All dimensions are in M.M.

SIZE	50	80	100	150
PORT	51	76	101	152
L	230	310	350	480
ϕD	165	200	220	285
b	20	20	20	22
ϕg	102	138	158	212
f	3	3	3	3
ϕU	18	18	18	22
N	4	8	8	8
K. PCD	125	160	180	240

Sr.No.	QTY.	NOMENCLATURE	MATERIAL
16	Req.	Gland Studs & Nuts(Not Shown)	CARBON STEEL
15	Req.	Body Studs & Nuts(Not Shown)	CARBON STEEL
14	1	Set Screw	CARBON STEEL
13	Req.	Gland Packings	Metallic wire reinforced asbestos
12	1	Ball	AISI 304
11	1	Gland Plate	CARBON STEEL
10	1	Gland	CARBON STEEL
9	2-4	Pillar & Nuts	CARBON STEEL
8	1	Top Cover	CARBON STEEL
7	1	Spring	SPRING STEEL
6	2	Spring Button	CARBON STEEL
5	1	Stem	AISI 410
4	1	Valve	AISI 410
3	1	Seat ring	AISI 410
2	1	Body Cover	ASTM A216 Gr. WCB
1	1	Body	ASTM A216 Gr. WCB

BILL OF MATERIAL

TITLE : G.A. DRAWING OF C.S. PRESSURE RELIEF SAFETY VALVE FLANGED END 150#

DARSHAN VALVE MFG CO

APPD. BY : JB
 CHK. BY : DJ
 DATE : 01.04.2013
 SCALE : N.T.S
 MAT. : As shown

Works : 42,Shreeji Industrial Estate,Raipur Mill Comp
 Saraspur,Ahmedabad,Gujarat-INDIA

DRG NO:MODEL NO-
 DVFL-422-ND-STRIGHT

SHEET: 1 OF 1
 REVISION : 0